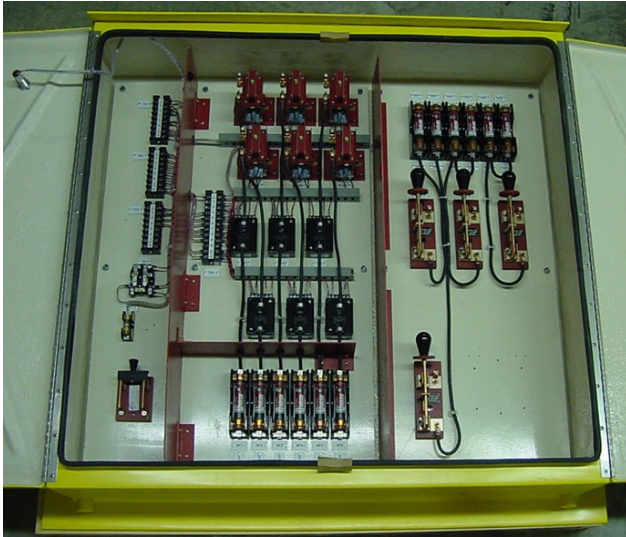


# SWITCH AND RAIL HEATER CABINETS



Contact Rail Heater Control Cabinet with (6) Contactors,  
(6) sets of Load Fuses, W/ Provisions for Repeater Case  
Used by CTA



#050528 600 VDC Switch Heater Control Unit  
With 12 Load Fuses  
Also available #050529 9 Load Fuses; #050527  
6 Load Fuses  
Used By CTA



#050526 600 VDC Switch Heater Control Unit  
With 3 Load Fuses  
Used by CTA



#050108 8 Circuit, 1000 VDC Switch Heater  
Control Unit for  
St. Louis Metro  
Also available #050112 12 Load Fuses; and  
#050104 4 Load Fuses

POWERSWITCH Switch and Rail Heater Control Units are made in accordance with specific contract specifications. Shown here are some examples of assemblies similar to as supplied at Chicago Transit Authority, and St. Louis Metro.

**POWERSWITCH, INC.**

815 E. CHERRY ST.

TROY, MO 63379

PH 1-800-526-6740

FAX 636-528-8937

EMAIL: [pssales@normandymachine.com](mailto:pssales@normandymachine.com)