

# POWERSWITCH

1000 VDC TRACTION POWER  
CONTROL COMPONENTS

## 1000 VDC CURRENT MONITORS

GORT ELECTRONIC CURRENT MONITORS WERE DEVELOPED BY A POWERSWITCH AFFILIATE TO MEET THE DEMAND FOR A DEVICE DESIGNED SPECIFICALLY TO INDICATE WHEN ELECTRIFIED RAIL SNOW-MELTERS ARE ON OR OFF. THESE NORMALLY OPEN RELAYS CLOSE WHEN MONITORED CURRENT EXCEEDS A PRESELECTED VALUE. ELECTROMAGNETICALLY ISOLATED INPUT CURRENT MORE THAN THE PRESET VALUE CAUSES TWO SETS OF ISOLATED CONTACTS TO CLOSE TO TURN ON A LOCAL SIGNAL LIGHT OR PROVIDE REMOTE INDICATION THAT CURRENT IS FLOWING TO THE MONITORED LOAD.

### FEATURES

ELECTROMAGNETIC ISOLATION BETWEEN SENSING AND CONTACT CIRCUITS.  
NEGLIGIBLE INSERTION LOSS.  
PROVIDES POSITIVE INDICATION THAT POWER IS ON.

### SPECIFICATIONS

INPUT CIRCUIT AMPACITY: 40 AMPS  
DIELECTRIC STRENGTH: 1000 VDC  
LINE VOLTAGE DROP: 0.3 VOLTS @ 40 AMPS  
INSERTION LOSS: LESS THAN 1/2 WATT  
CLOSES WHEN CURRENT EXCEEDS FACTORY SETTING  
Last digit of Part Number Indicates Factory Setting.  
ie: Part No. 930402 closes when current exceeds 2 amps.  
UNITS SET TO CLOSE AT CURRENTS BETWEEN 2 AND 40 AMPS ARE AVAILABLE. PART #930402 IS RECOMMENDED FOR RAIL HEAT TAPE CONTROL WHEN THE CURRENT VARIES BETWEEN 1 AND 40 AMPS. PART #930405 IS RECOMMENDED FOR TRACK SWITCH HEATER CONTROL WHEN THE TYPICAL CURRENT IS MORE THAN 5 AMPS.

#### CONTACT RATING:

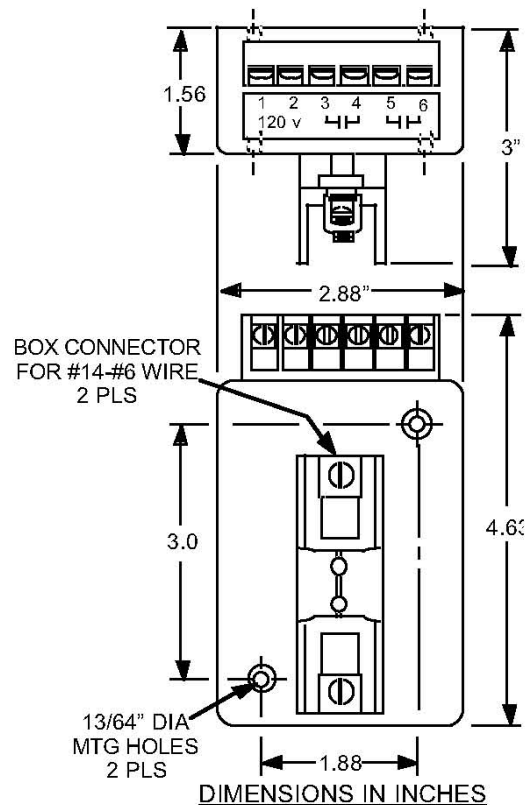
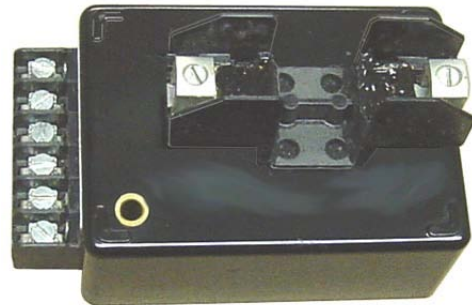
3 Amp @ 120 VAC or 28 VDC  
0.5 Amp @ 125 VDC

#### Dielectric Strength:

Between contacts and input: 1500 VDC  
Between contact circuits: 600 VAC

#### POWER REQUIREMENT:

1.3 VA @ 115 VAC or 1.5 Watts @ 125 VDC



**POWERSWITCH, Inc.**

815 E. CHERRY ST. <> TROY, MO 63379 <> 1-800-526-6740

[www.normandymachine.com](http://www.normandymachine.com)